

Surface Roughness Tester

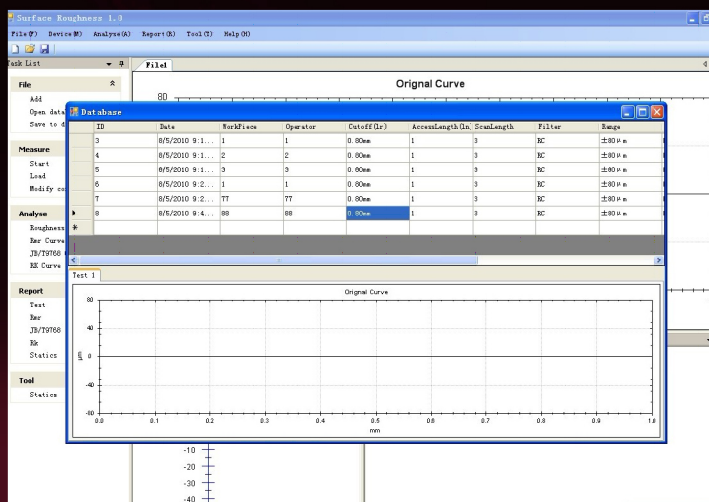
SRT-300



Main feature

- Electromechanical integration design, small volume, light weight, easy to use;
- Using DSP chip to control and data processing, high speed, low power consumption;
- 128 x 64 LED dot matrix display, digital / graphic display; highlight no perspective;
- Intuitive and rich display information, can display all the parameters and graphics;
- Compatible with ISO, DIN, ANSI, JIS national standards;
- Residual quantity icon, prompting the user to charge;
- Continuous working time: more than 20 hours.
- Real-time clock settings and display, convenient data recording and storage.
- With automatic dormancy, automatic shutdown and power saving function
- Reliable control motor to go dead circuit and software design
- Measurement information display, menu prompt information, false information and switch machine and other tips that information;
- Can be connected to a computer and printer;
- Optional different sensor, measuring platform, mini printer, extension rod and other accessories.
- Plastic shell, inspired by "TRANSFORMERS" stylish design, portable, high reliability.
- Optional bluetooth function.

Software



Surface Roughness Tester

SRT-300

testing parameters	Ra, Rz, Rq, Rt, Rp, Rv, R3z, R3y, RzJIS, Rsk, Rku, Rsm, Rmr, Rx;
measuring range (um)	Ra: 0.005-16.000 Rz: 0.02-160.00
sample length (mm)	0.25, 0.80, 2.50
evaluation length(mm)	(1-5)L
maximum drive stroke	17.5mm/0.7inch
indication accuracy	0.001
indication error	±(7-10)%
variability	<6%
data storage	100 groups
power	rechargeable li-battery
working temperature	-20℃~40℃
relative humidity	<90%
size	158mmx64mmx46mm
weight of host	300g



Specification



No.	Name	Q'ty
1	host	1
2	standard s ensor	1
3	calibration block and bracket	1
4	bracket	1
5	charger	1
6	adjustable support	1
7	operating manual	1
8	warranty c ard	1
9	certificate of approva l	1
10	instrument case	1
11	USB cable	1
12	software	1



Metal working plate

elevating, convenient and stable for test process
Granite platform size: 390 * 250 * 20 mm
Vertical height: 300± 1 mm
Weight: 15kg



Marble working plate

elevating,V groove,high accuracy to test tiny work piece
Granite platform flatness: 00 grade| plane tolerance value 3 μm
Granite platform size: 400 * 250 * 70 mm
Vertical height: 300± 1 mm
Lifting hysteresis error: hand wheel rotation 1/6 circle
Weight: 40 kg

Surface Roughness Tester

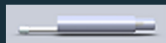
SRT-300



Extension rod. Used to extend length of sensor when test deep hole (55mm)



Right angle extension rod /measuring mechanism



standard sensor, plane& shaft& inner surface of hole>6mm, depth<22mm



small hole sensor, cylindrical& plane &inner surface of hole>2mm, depth<9mm



curved surface sensor for cylindrical, curvature radius>3mm, work with plate



deep groove sensor, cylindrical& plane& groove width>3mm, depth<10mm work with plate



Roughness comparison block

High quality comparison block of roughness tester

Strict anti-trust treatment process 30 comparison block/set



External Mini printer